

# Patons Bohemian



## PATONS® BOHEMIAN CHINESE STYLE (TO KNIT)

### SIZES

#### Bust measurement

**Extra-Small/Small**

28-34 ins [71-86.5 cm]

**Medium**

36-38" [91.5-96.5"]

**Large**

40-42" [101.5-106.5"]

#### Extra-Large

44-46" [112-117"]

**2 Extra-Large/3 Extra-Large**

48-54" [122-137"]

**4 Extra-Large/5 Extra-Large**

56-62" [142-157.5"]

#### Finished bust

**X-Small/Small** 36 ins [91.5 cm]

**Medium** 40" [101.5"]

**Large** 44" [112"]

**X-Large** 48" [122"]

**2/3X-Large** 56" [142"]

**4/5X-Large** 64" [162.5"]

### MATERIALS

Patons® Bohemian (80 g/2.8 oz)

Size XS/S (M-L-XL-2XL/3XL-4XL/5XL)

**Main Color (MC):**

(Red) 8 (9-9-10-11-12) balls

**Contrast A:** (Black) 2 (2-2-2-2-2) balls

Size 8 mm (U.S. 11) knitting needles **or size needed to obtain tension.**

Size 8 mm (U.S. L or 11) crochet hook for edging. 2 Frog closures.

### TENSION

8 sts and 14 rows = 4 ins [10 cm] in stocking st.

### ABBREVIATIONS

**Alt** = Alternate.

**Beg** = Beginning.

**Ch** = Chain.

**Cont** = Continue(ity).

**Dec** = Decrease.

**Inc** = Increase 1 stitch by knitting into front and back of next stitch.

**K** = Knit.

**P** = Purl.

**Rep** = Repeat.

**RS** = Right side.

**Sc** = Single crochet.

**Sl st** = Slip stitch.

**St(s)** = Stitch(es).

**WS** = Wrong side

### INSTRUCTIONS

*The instructions are written for smallest size. If changes are necessary for larger sizes the instructions will be written thus ( ). When only one number is given, it applies to all sizes. For ease in working, circle all numbers pertaining to your size.*

#### LEFT FRONT

\*\*With MC, cast on 18 (20-22-24-28-32) sts loosely.

Beg with a knit row, proceed in stocking st until work from beg measures 5 ins [12.5 cm], ending with RS facing for next row.\*\*

Place marker at end of last row.

Cont even until work from beg measures 18 ins [45.5 cm], ending with RS facing for next row.

**Shape armhole:** Cast off 2 (2-2-3-5-8) sts beg of next row. 16 (18-20-21-23-24) sts. Work 1 row even.

Dec 1 st at armhole edge on next and every following alt row 0 (0-1-2-3-4) time(s) more. 15 (17-18-18-19-19) sts.

Cont even until armhole measures 4 (4½-5-5½-6½-7½) ins [10 (11.5-12.5-14-16.5-19) cm], ending with WS facing for next row.

**Neck shaping:** Cast off 4 (5-5-5-6-6) sts beg next row (neck edge). 11 (12-13-13-13-13) sts.

Dec 1 st at neck edge on next and every following alt row twice more. 8 (9-10-10-10-10) sts.



ABBREVIATIONS: [www.patonsyarns.com/glossary](http://www.patonsyarns.com/glossary)

INTERMÉDIAIRE



Cont even until armhole measures 8 (8½-9-9½-10½-11½) ins [20.5 (21.5-23-24-26.5-29) cm], ending with RS facing for next row. Cast off loosely.

#### RIGHT FRONT

Work from \*\* to \*\* as given for Left Front. Place a marker at beg of last row.

Cont even until work measures same length as Left Front to beg of armhole shaping, ending with WS facing for next row.

**Shape armhole:** Cast off 2 (2-2-3-5-8) sts beg of next row. 16 (18-20-21-23-24) sts. Dec 1 st at armhole edge on next and every following alt row 0 (0-1-2-3-4) time(s) more. 15 (17-18-18-19-19) sts.

Cont even until armhole measures 4 (4½-5-5½-6½-7½) ins [10 (11.5-12.5-14-16.5-19) cm], ending with RS facing for next row.

**Neck shaping:** Cast off 4 (5-5-5-6-6) sts beg next row (neck edge). 11 (12-13-13-13-13) sts.

Work 1 row even.

Dec 1 st at neck edge on next and every following alt row twice more. 8 (9-10-10-10-10) sts.

Cont even until armhole measures same length as Left Front to shoulder, ending with RS facing for next row. Cast off loosely.

#### BACK

**Note:** When working from chart, wind small balls of the colors to be used, one for each separate area of color in the design. Start new colors at appropriate points. To change colors, twist the two colors around each other where they meet, on WS, to avoid a hole.

With MC, cast on 36 (40-44-48-56-64) sts loosely.

Beg with a knit row, proceed in stocking st until work from beg measures 5 ins [12.5 cm], ending with RS facing for next row. Place marker at each end of last row.

Cont even until work from beg measures 18 rows less than Left Front to armhole shaping, ending with RS facing for next row.

**Place chart: Next row:** With MC, K6 (8-10-12-16-20). Knit 1st row of Chart across next 24 sts, reading row from **right** to left. With MC, K6 (8-10-12-16-20).

**Next row:** With MC, P6 (8-10-12-16-20). Purl 2nd row of Chart across next 24 sts, reading row from **left** to right. With MC, P6 (8-10-12-16-20). Chart is now in position.

Cont working in chart until 18th row of Chart has been completed.

**Shape armholes:** Keeping cont of Chart, cast off 2 (2-2-3-5-8) sts beg next 2 rows. 32 (36-40-42-46-48) sts.

Dec 1 st each end of needle on next and every following alt row 0 (0-1-2-3-4) time(s) more. 30 (34-36-36-38-38) sts.

Cont working in chart to end of Chart.

With MC, cont even in stocking st until armhole measures same length as Fronts to shoulder, ending with RS facing for next row. Cast off loosely.

Place markers on cast off edge 8 (9-10-10-10-10) sts in from side edges for shoulders.

#### SLEEVES

With MC, cast on 20 (20-22-22-24-24) sts loosely.

Beg with a knit row, work 4 rows in stocking st.

Inc 1 st each end of needle on next and every following 10th (8th-8th-6th-6th-4th) row to 28 (26-28-26-32-25) sts, then every following 12th (10th-10th-8th-8th-6th) row to 30 (32-34-36-40-42) sts.

Cont even until work from beg measures 17 (17-17½-17½-18-18) ins [43 (43-44.5-44.5-45.5-45.5) cm], ending with RS facing for next row.

**Shape top:** Cast off 2 (2-2-2-3-3) sts beg next 2 rows. 26 (28-30-32-34-36) sts.

Dec 1 st each end of needle on 3rd and every following 4th row to 18 (20-22-26-28-28) sts, then every following alt row to 14 sts, then every row to 8 sts. Cast off loosely.

#### FINISHING

**Collar:** Sew shoulder seams. With RS of work facing and MC, pick up and knit 14 (15-15-15-16-16) sts up right front neck edge, 14 (16-16-16-18-18) sts across back neck edge and 14 (15-15-15-16-16) sts down left front neck edge. 42 (46-46-46-50-50) sts.

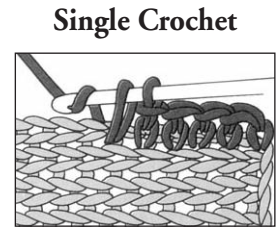
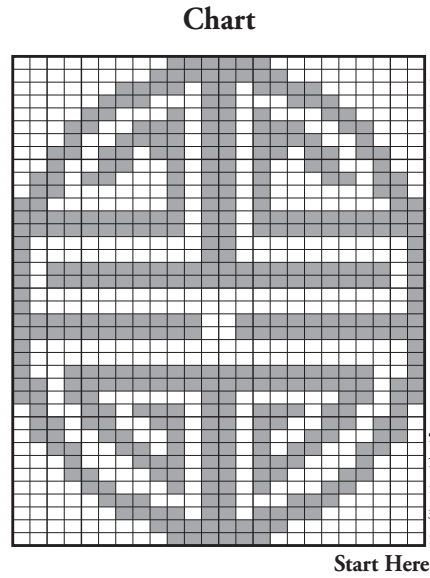
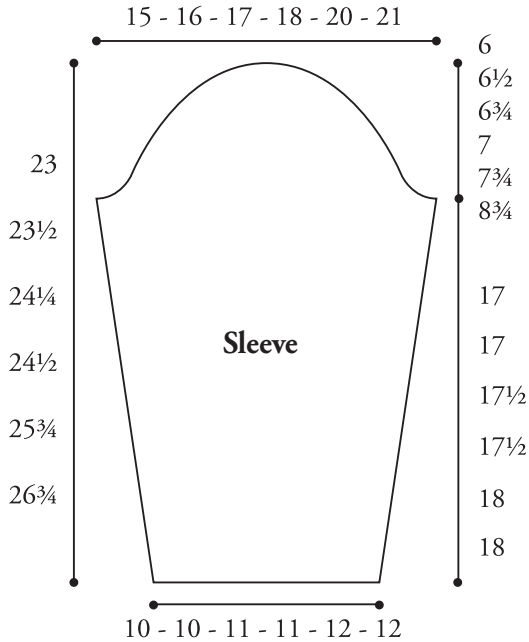
Beg with a purl row, proceed in stocking st, dec 1 st at each end of needle on next 3 rows. Cast off loosely, decreasing as before.

Sew in sleeves. Sew side and sleeve seams, leaving sides open below markers for side slits.

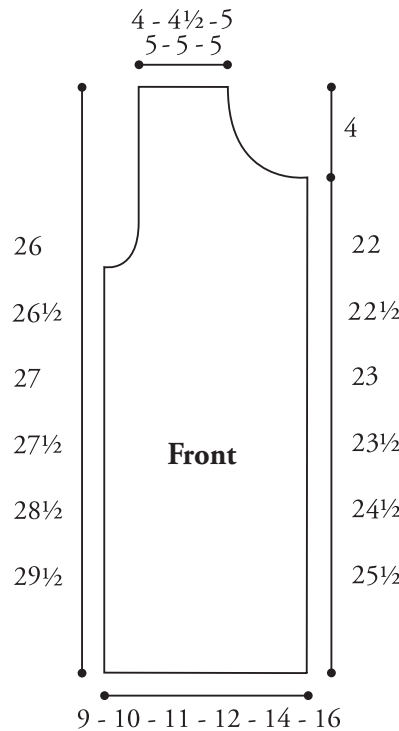
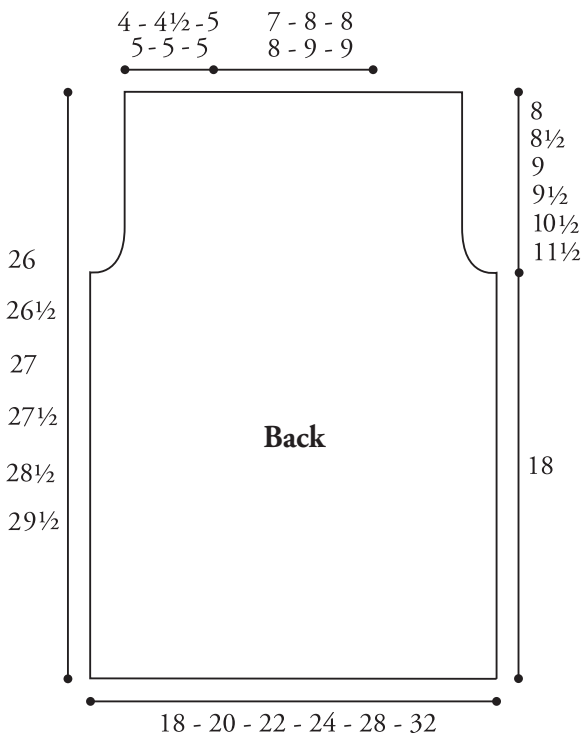
**Body edging:** With RS of work facing and crochet hook, join A with sl st to top of slit at right side seam. Ch 1. Work 1 round of sc around edge of Jacket (see Diagram), having 3 sc in each corner. Join with sl st to first sc. Fasten off.

**Sleeve edging:** With RS of work facing and crochet hook, join A with sl st to lower edge of sleeve at seam. Ch 1.

Work 1 round of sc evenly around edge of sleeve. Join with sl st to first sc. Fasten off.



**Key**  
 □ = MC  
 ■ = Contrast A



**Patons**

... a part of your life.

P.O. Box 40, Listowel ON N4W 3H3