

Patons Grace



GINGHAM AND FLOWERS SET

SIZES

To fit chest measurement

6 mos	17 ins	[43 cm]
12 mos	19 ins	[48 cm]
18 mos	21 ins	[53.5 cm]
2 yrs	21½ ins	[54.5 cm]
3 yrs	22½ ins	[57 cm]

TENSION

22 sts and 30 rows = 4 ins [10 cm] with larger needles in stocking st.

MATERIALS

Patons Grace (50 g/1.75 oz)

APRON DRESS

Sizes 6 m 12 m 18 m 2 yrs 3 yrs

Main Color (MC) (White)

2 2 3 3 4 balls

Contrast A (Dk Pink)

1 2 2 2 2 ball(s)

Contrast B (Lt Pink)

1 1 1 1 1 ball

Contrast C (Green)

1 1 1 1 1 ball

KERCHIEF (2 sizes only)

Sizes 6-18 mos 3 yrs

Main Color (MC) (White)

1 1 ball

Contrast A (Dk Pink)

1 1 ball

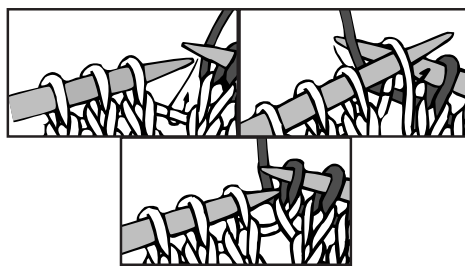
Contrast B (Lt Pink)

1 1 ball

Sizes 3.25 mm (U.S. 3) and 4 mm (U.S. 6) knitting needles. Sizes 3.25 mm (U.S. 3) and 4 mm (U.S. 6) circular knitting needles 24 ins [60 cm] long **or sizes needed to obtain tension**. St holder. Length of ¾ inch [2 cm] wide elastic. 2 buttons.

ABBREVIATIONS

M1 = make one st by picking up horizontal loop lying before next st and knitting into back of loop.



INSTRUCTIONS

The instructions are written for smallest size. If changes are necessary for larger sizes, the instructions will be written thus ().

Note: When working from chart, carry colors not in use loosely across WS of work. When colors must pass over more than 3 sts, weave them over and under center point of color in use. The colors are never twisted around one another.

APRON DRESS

SKIRT

With A and smaller circular needle, cast on 164 (164-184-184-202) sts. Join in round, placing a marker on first st (center back) and proceed as follows:

1st rnd: Purl.

2nd rnd: *K2tog. yfwd. Rep from * around.

3rd rnd: Purl.

Change to larger circular needle.

4th and 5th rnds: With MC, knit.

6th rnd: *K13. M1. K14 (14-13-13-9). M1. Rep from * 5 (5-6-6-8) times more. K2 (2-2-2-4). 176 (176-198-198-220) sts.

Work Chart to end of chart reading rows from **right** to left, noting 22 st rep will be worked 8 (8-9-9-10) times.

Next rnd: With MC, knit.

Next rnd: *K13. K2tog. K12 (12-11-11-7). K2tog. Rep from * 5 (5-6-6-8) times more. K2 (2-2-2-4). 164 (164-184-184-202) sts.

With MC, cont knitting in rnds until Skirt from beg measures 8¾ (9¼-10-11-12½) ins [22 (23.5-25.5-28-32) cm].



ABBREVIATIONS: www.patonsyarns.com/glossary

Next rnd: *K1 (2-2-3-2). K2tog. K2. K2tog. Rep from * to last 3 (4-0-4-2) sts. K3 (4-0-4-2). 118 (124-138-144-152) sts. Break MC. Place a marker at end of last rnd.

Next rnd: With A, knit.

Next rnd: Purl.

Next rnd: *K2tog. yfwd. Rep from * around.

Next rnd: Purl.

With A, knit in rnds until work from marker measures 1 inch [2.5 cm].

Next rnd: (Fold line). Purl.

Knit in rnds until work from fold line measures 1 inch [2.5 cm]. Cast off loosely.

BIB

With A and larger straight needles, cast on 34 (38-38-42-42) sts.

1st row: (RS). *With A, K2. With B, K2. Rep from * to last 2 sts. With A, K2.

2nd row: *With A, P2. With B, P2. Rep from * to last 2 sts. With A, P2.

3rd row: *With B, K2. With MC, K2. Rep from * to last 2 sts. With B, K2.

4th row: *With B, P2. With MC, P2. Rep from * to last 2 sts. With B, P2.

These 4 rows form check pat.

Cont in check pat until work from beg measures 5 (5½-5½-6-6) ins [12.5 (14-14-15-15) cm], ending on a 2nd or 4th row of pat.

Next row: (RS). With A, knit, dec 3 sts evenly across. 31 (35-35-39-39) sts.

Change to smaller needles.

Next row: With A, knit.

Next row: With A, K1. *K2tog. yfwd. Rep from * to last 2 sts. K2.

Next row: With A, knit.

Cast off knitwise.

Side Edging: With RS of work facing, A and smaller needles, pick up and knit 29 (31-31-33-33) sts along side edge of Bib.

Next row: Knit.

Next row: K1. *K2tog. yfwd. Rep from * to last 2 sts. K2.

Next row: Knit.

Cast off knitwise. Rep on opposite side of Bib.

POCKET (make 2)

With A and larger straight needles, cast on 26 sts.

Proceed in check pat as given for Bib until work from beg measures 3 (3¼-3¼-3½-3½) ins [8 (8.5-8.5-9-9) cm] ending on a 2nd or 4th row of pat.

Next row: (RS). With A, knit, dec 1 st at center. 25 sts.

Next row: With A, knit.

Next row: With A, K1. *K2tog. yfwd. Rep from * to last 2 sts. K2.

Next row: With A, knit.

Cast off knitwise.

STRAP (make 2)

With A and smaller straight needles, cast on 9 sts.

1st row: *K1. P1. Rep from * to last st. K1.

This row forms seed st pat.

Cont in seed st pat until Strap measures 8½ (9½-10½-11½-12½) ins [21.5 (24-26.5-29-32) cm].

Cast off in pat.

FINISHING

Fold waistband to WS along fold line and sew in position, leaving an opening at center back to insert elastic. Cut elastic to waist measurement and insert in waistband. Sew ends of elastic tog securely. Sew opening at waist closed. Sew Pockets and Bib in position, attaching Bib to waistband stitching and sewing sides of Bib to waistband on WS. Sew Straps in position. Sew buttons on Straps using eyelet holes of Bib edging to form buttonholes and noting Straps cross at back.

KERCHIEF

With A and smaller straight needles, cast on 169 (173) sts.

1st row: (WS). Knit.

2nd row: K1. *K2tog. yfwd. Rep from * to last 2 sts. K2.

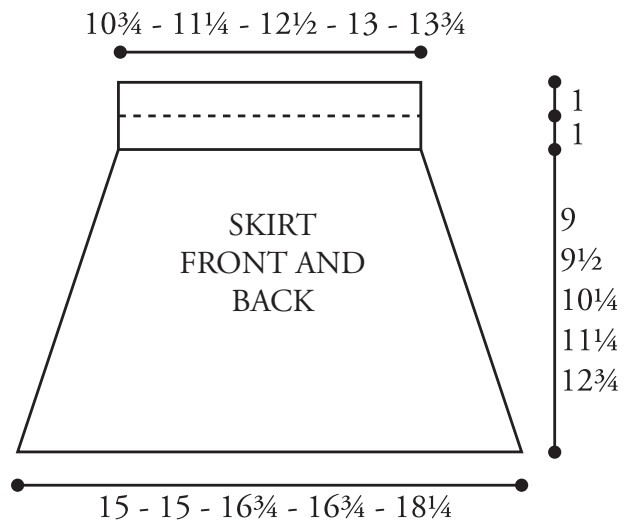
3rd row: Cast off 58 sts (tie). *K10 (11). M1. Rep from * 4 times more. K3 (2). Cast off rem 58 sts (tie).

With RS of work facing, rejoin A to rem 58 (62) sts.

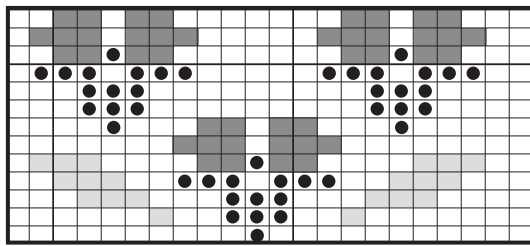
Change to larger needles and proceed in check pat as given for Bib of Apron Dress, dec 1 st each end of needle on 5th and following alt rows until there are 52 sts, then on every row until there are 2 sts.

Next row: K2tog. Fasten off.

Side Edging: With RS of work facing, A and smaller straight needles, pick up and knit 35 (39) sts along side edge of Kerchief. Cast off knitwise (WS). Rep along opposite side edge.







CHART



Start Here

22 st rep

Key

-  = MC
-  = Contrast A
-  = Contrast B
-  = Contrast C

Patons

... a part of your life.

P.O. Box 40, Listowel ON N4W 3H3