

Patons
Classic Wool

Patons
DECOR



FARAWAY PLACES

SIZES

Bust measurement

Small	30-32 ins	[76-81 cm]
Medium	34-36 ins	[86-91 cm]
Large	38-40 ins	[97-102 cm]
Extra-Large	42-44 ins	[107-112 cm]

Finished bust

Small	38 ins	[97 cm]
Medium	42 ins	[107 cm]
Large	45 ins	[114.5 cm]
Extra-Large	49 ins	[124.5 cm]

TENSION

20 sts and 24 rows = 4 ins [10 cm] with larger needles in fair isle pat.

MATERIALS

Patons Classic Wool (100 g/3.5 oz)
or Patons Décor (100 g/3.5 oz)

Size	S	M	L	XL	
Main color (MC) (Black)	2	2	2	3	balls
Contrast A (Red)	1	2	2	2	ball(s)
Contrast B (Purple)	1	2	2	2	ball(s)
Contrast C (Green)	1	1	1	1	ball
Contrast D (Teal)	1	1	1	2	ball(s)

Sizes 4 mm (U.S. 6) and 5 mm (U.S. 8) knitting needles or size needed to obtain tension. Size 4 mm (U.S. 6) circular knitting needle 36 ins [90 cm] long. 6 buttons.

INSTRUCTIONS

The instructions are written for smallest size. If changes are necessary for larger sizes the instructions will be written thus ().

Note: When working from chart, carry colors not in use loosely across WS of work but never over more than 5 sts. When it must pass over more than 5 sts, weave it over and under color in use on next st or at center point of sts it passes over. The colors are never twisted around one another.

BACK

With B and smaller needles cast on 95 (105-113-123) sts.

****1st row:** (RS). With D, K1. *P1. K1. Rep from * to end of row.

2nd row: With A, P1. *K1. P1. Rep from * to end of row.

3rd row: With C, as 1st row.

4th row: With MC, as 2nd row.

5th row: With C, as 1st row.

6th row: With A, as 2nd row.

7th row: With D, as 1st row.**

8th row: With B, as 2nd row.

Change to larger needles and work Chart in stocking st to row 90 (94-94-96) of chart reading knit rows from right to left and purl rows from left to right.

Armhole shaping: Keeping cont of chart, cast off 5 (6-7-9) sts beg next 2 rows.

Dec 1 st each end of needle on next and following 3 (5-7-8) alt rows. 77 (81-83-87) sts.

Cont working Chart to row 146 (152-154-156) of chart.

Shoulder shaping: Cast off 8 (8-8-9) sts beg next 4 rows, then 7 (8-9-8) sts beg following 2 rows. Leave rem 31 (33-33-35) sts on a st holder.

LEFT FRONT

***With B and smaller needles cast on 47 (51-55-61) sts.

Work from ** to ** as given for Back.

8th row: With B, as 2nd row inc 0 (1-1-0) st in center of last row. 47 (52-56-61) sts.***

Change to larger needles and work Chart in stocking st to row 90 (94-94-96) of chart reading knit rows from right to left and purl rows from left to right.

Shape armhole and front: Keeping cont of chart, cast off 5 (6-7-9) sts beg next row.

Work 1 row even.



ABBREVIATIONS: www.patonsyarns.com/glossary

Dec 1 st at armhole edge on next and following 2 (0-2-1) alt rows. 39 (45-46-50) sts. Work 1 row even.

Next row: Work 2tog. Work chart to last 2 sts. Work 2tog (front edge).

Work 1 row even.

Rep last 2 rows 0 (4-4-6) times more. 37 (35-36-36) sts.

Sizes S, M and L only: Dec 1 st at front edge only on next and following 5 (1-1) alt rows. 31 (33-34) sts.

All Sizes: Dec 1 st at front edge only on following 4th rows from previous dec until there are 23 (24-25-26) sts. Cont even until row 146 (152-154-156) of chart is complete.

Shoulder shaping: Cast off 8 (8-8-9) sts beg next and following alt row. Work 1 row even. Cast off rem 7 (8-9-8) sts.

RIGHT FRONT

Work from *** to *** as given for Left Front.

Change to larger needles and work Chart in stocking st to row 91 (95-95-97) of chart reading **knit** rows from **right** to left and **purl** rows from **left** to right.

Shape armhole and front: Keeping cont of chart, cast off 5 (6-7-9) sts beg next row.

Dec 1 st at armhole edge on next and following 2 (0-2-1) alt rows. 39 (45-46-50) sts. Work 1 row even.

Next row: Work 2tog (front edge). Work chart to last 2 sts. Work 2tog.

Work 1 row even.

Rep last 2 rows 0 (4-4-6) times more. 37 (35-36-36) sts.

Sizes S, M and L only: Dec 1 st at front edge only on next and following 5 (1-1) alt rows. 31 (33-34) sts.

All Sizes: Dec 1 st at front edge only on following 4th rows from previous dec until there are 23 (24-25-26) sts. Cont even until row 147 (153-155-157) of chart is complete.

Shoulder shaping: Cast off 8 (8-8-9) sts beg next and following alt row. Work 1 row even. Cast off rem 7 (8-9-8) sts.

FINISHING

Pin garment pieces to measurements, cover with a damp cloth. Steam lightly with iron. Remove cloth when dry.

Armbands: Sew shoulder seams. With RS of work facing, B and smaller needles pick up and knit 99 (103-107-107) sts evenly along armhole edge.

1st row: (WS). With D, P1. *K1. P1. Rep from * to end of row.

2nd row: With A, K1. *P1. K1. Rep from * to end of row.

3rd row: With C, as 1st row.

4th row: With MC, as 2nd row.

5th row: With C, as 1st row.

6th row: With A, as 2nd row.

7th row: With D, as 1st row.

8th row: With B, as 2nd row.

With B, cast off in ribbing.

Button and Buttonhole Band: With RS of work facing, B and circular needle, pick up and knit 95 (100-100-105) sts up right front edge to first front dec and 59 (63-67-69) sts up right front neck edge. Knit across 31 (33-33-35) sts from back st holder. Pick up and knit 59 (63-67-69) sts down left front neck edge to first front dec and 95 (100-100-105) sts down left front edge. 339 (359-367-383) sts. **Do not join.**

Working back and forth across needle, proceed as follows:

1st row: (WS). With D, P1. *K1. P1. Rep from * to end of row.

2nd row: With A, K1. *P1. K1. Rep from * to end of row.

3rd row: With C, as 1st row.

4th row: With MC, rib across 3 sts. *Cast off 2 sts. Rib across 16 (17-17-18) sts (including st on needle after cast off). Rep from * 4 times more. Cast off 2 sts. Rib to end of row.

5th row: With C, rib, casting on 2 sts over cast off sts.

6th row: With A, as 2nd row.

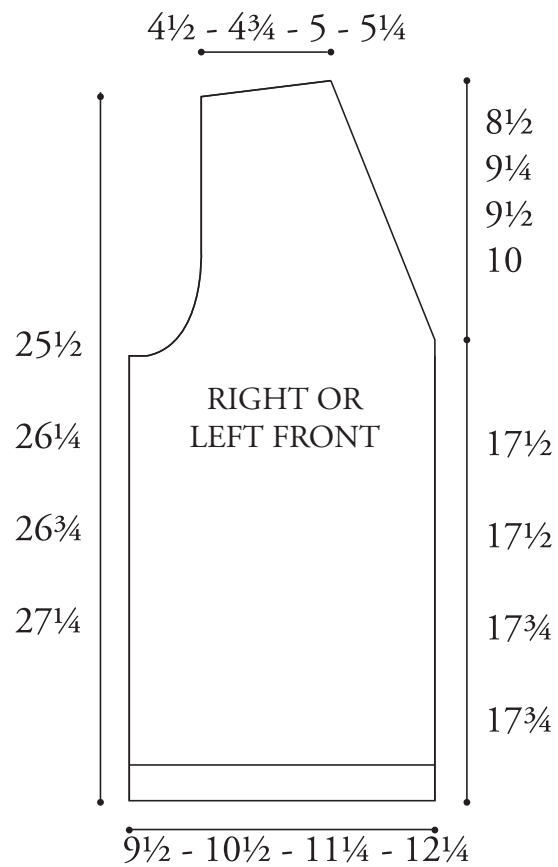
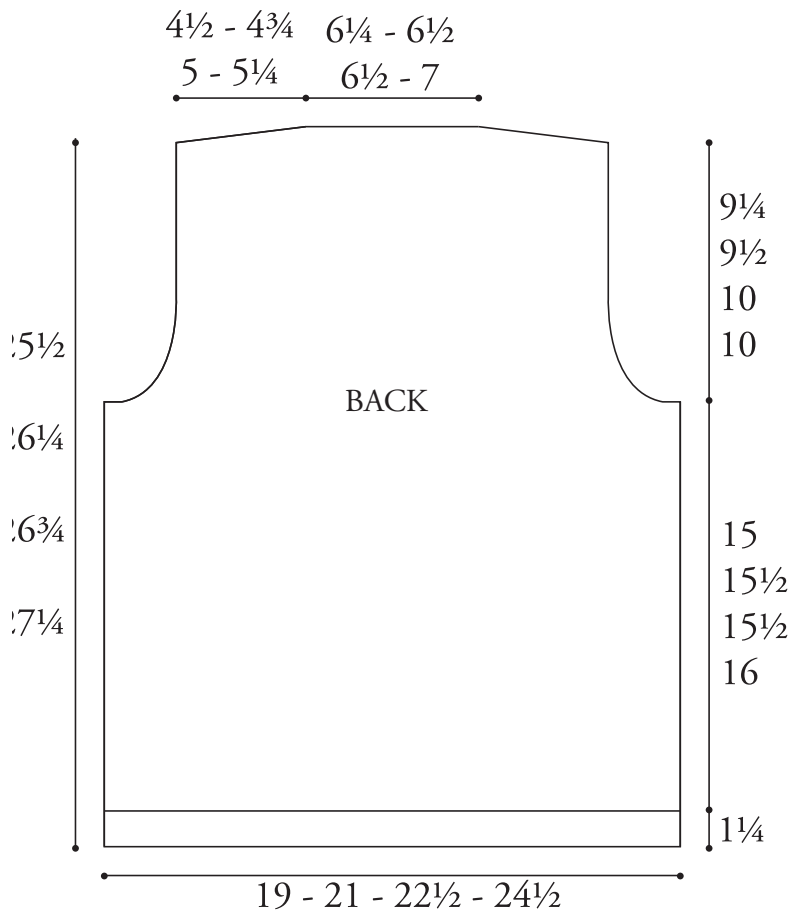
7th row: With D, as 1st row.

8th row: With B, as 2nd row.

With B, cast off in ribbing.

Sew side and armband seams.

Sew buttons to correspond to buttonholes. Press seams.



Patons

... a part of your life.

P.O. Box 40, Listowel ON N4W 3H3

CHART

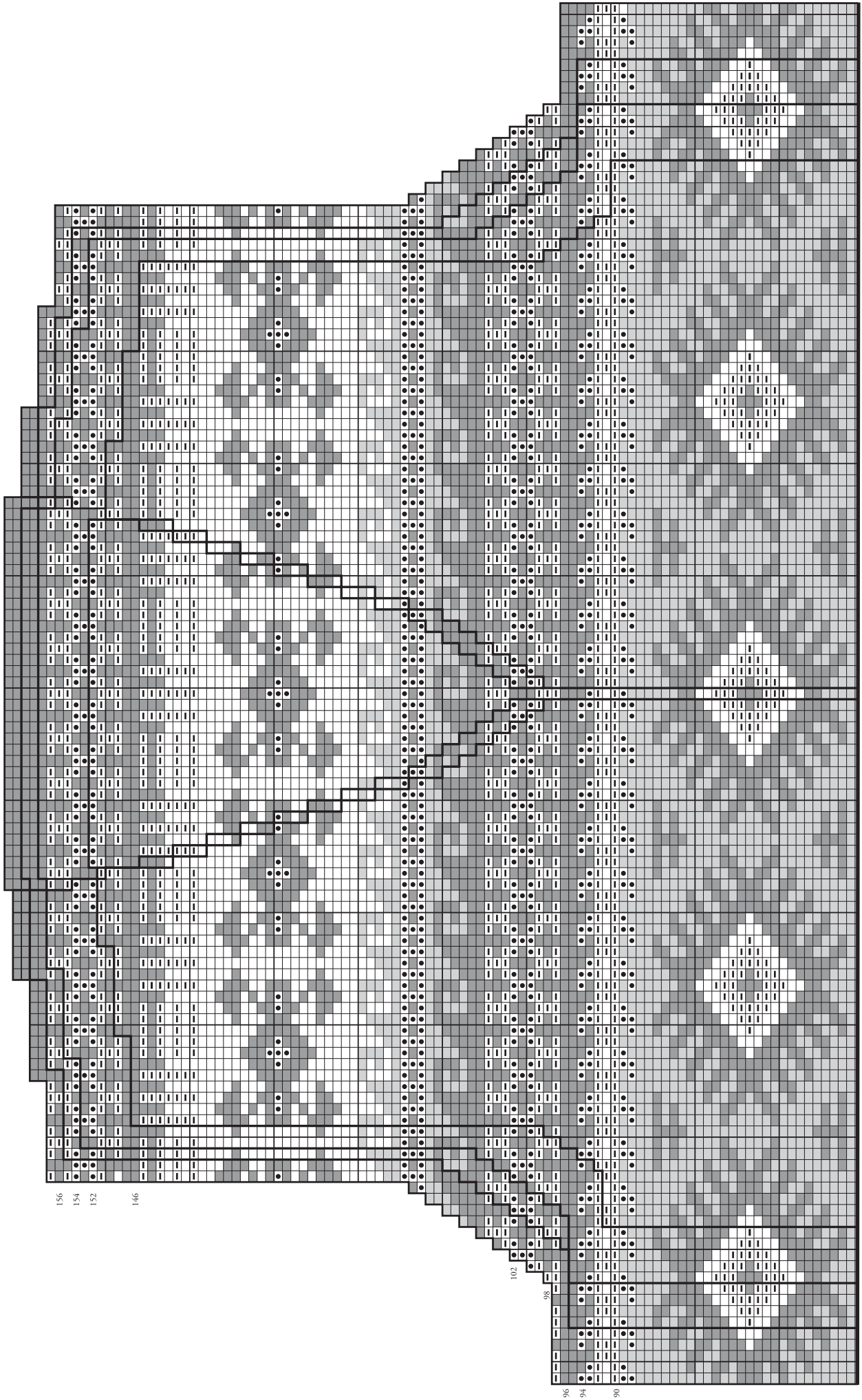
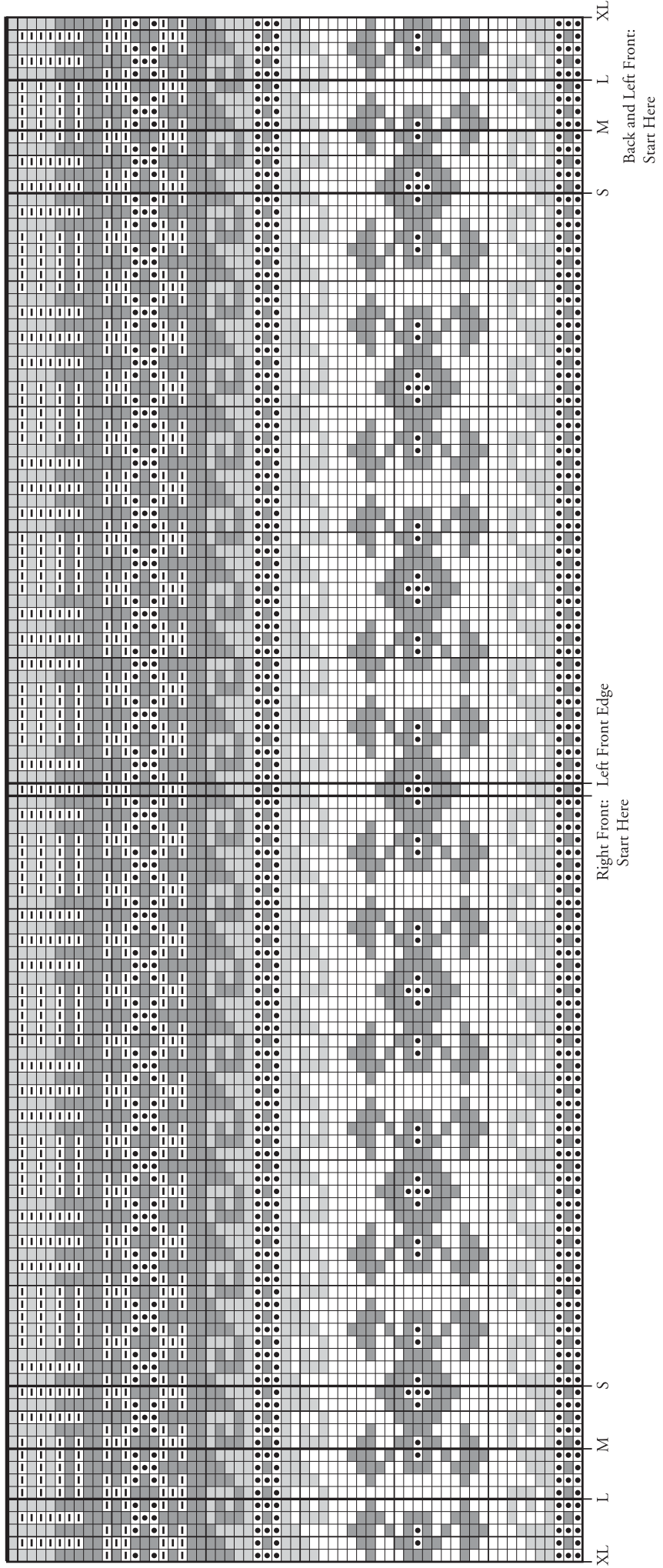







Chart continued on next page



Key

-  = MC
-  = Contrast A
-  = Contrast B
-  = Contrast C
-  = Contrast D