

Patons® Classic Wool

Patons DECOR



DAD'S CARDIGAN

SIZES

ADULT'S VERSION

Chest measurement

Small	30-32 ins	[76-81 cm]
Small	34-36 ins	[86-91 cm]
Large	38-40 ins	[97-102 cm]
Extra-Large	42-44 ins	[107-112 cm]

Finished chest

Small	40 ins	[101.5 cm]
Medium	44 ins	[112 cm]
Large	47 ins	[119.5 cm]
Extra-Large	51 ins	[129.5 cm]

MATERIALS

Patons Classic Wool (100 g/3.5 oz)
or Patons Décor (100 g/3.5 oz)

Size	S	M	L	XL
	10	10	11	12 balls

Sizes 4 mm (U.S. 6) and 5 mm (U.S. 8) knitting needles or size needed to obtain tension. Cable needle. 6 buttons.

TENSION

18 sts and 24 rows = 4 ins [10 cm] with larger needles in stocking st.

ABBREVIATIONS

C2F = knit into front of first st on left hand needle, then knit into front of 2nd, slipping both sts off needle tog.

C2B = knit into front of 2nd st on left hand needle, then knit into front of first st, slipping both sts off needle tog.

C4B = slip next 2 sts onto a cable needle and leave at back of work. K2, then K2 from cable needle.

C4F = slip next 2 sts onto a cable needle and leave at front of work. K2, then K2 from cable needle.

T4B = slip next 2 sts onto a cable needle and leave at back of work. K2, then P2 from cable needle.

T4F = slip next 2 sts onto a cable needle and leave at front of work. K2, then P2 from cable needle.

KB1 = Knit into back of next st.

INSTRUCTIONS

The instructions are written for smallest size. If changes are necessary for larger sizes, the instructions will be written thus: ().

PANEL PAT A (worked over 20 sts).

1st row: P2. C2B. P2. C4B. C4F. P2. C2F. P2.

2nd row: K2. P2. K2. P8. K2. P2. K2.

3rd row: P2. C2B. P2. K8. P2. C2F. P2.

4th row: As 2nd row.

These 4 rows form Panel Pat A.

PANEL PAT B (worked over 20 sts).

1st row: P2. C4B. P2. K4. P2. C4B. P2.

2nd and alt row: Knit all knit sts and purl all purl sts as they appear.

3rd row: P2. K4. P2. C4B. P2. K4. P2.

5th row: As 1st row.

7th row: T4B. T4F. C4B. T4B. T4F.

9th row: K2. P4. (C4F) twice. P4. K2.

11th row: K2. P4. K2. C4B. K2. P4. K2.

13th row: As 9th row.

15th row: T4F. T4B. C4B. T4F. T4B.

16th row: As 2nd row.

These 16 rows form Panel Pat B.

BACK

With smaller needles, cast on 95 (105-115-125) sts.

1st row: (RS). K1. *P1. K1. Rep from * to end of row.

2nd row: P1. *K1. P1. Rep from * to end of row.

Rep these 2 rows (K1. P1) ribbing for 2 ins [5 cm] ending on a 2nd row and inc 25 (27-25-27) sts evenly across last row. 120 (132-140-152) sts.

Change to larger needles and proceed in pat as follows:

1st row: (RS). (P1. KB1) 5 (8-10-13) times. (Work 1st row of Panel Pat A. Work 1st row of Panel Pat B) twice. Work 1st row of Panel Pat A. (KB1. P1) 5 (8-10-13) times.

2nd row: K10 (16-20-26). (Work 2nd row of Panel Pat A. Work 2nd row of Panel Pat B) twice. Work 2nd row of Panel Pat A. K10 (16-20-26).



ABBREVIATIONS: www.patonsyarns.com/glossary

These 2 rows form rice st pat.
Panel pats are now in position.
Cont in pat, keeping cont of panel pats,
until work from beg measures 15 (15½-
16-17) ins [38 (39.5-40.5-43) cm],
ending with RS facing for next row.

Shape raglans: Keeping cont of pat,
cast off 4 (4-5-5) sts beg next 2 rows.
112 (124-130-142) sts.

Next row: K1. Sl1. K1. pss0. Pat to last
3 sts. K2tog. K1.

Next row: P2. Pat to last 2 sts. P2.
Rep last 2 rows 22 (20-19-15) times
more. 66 (82-90-110) sts.

Next row: K1. Sl1. K1. pss0. Pat to last
3 sts. K2tog. K1.

Next row: P1. P2tog. Pat to last 3 sts.
P2togtbl. P1.

Rep last 2 rows 9 (12-13-18) times
more. 26 (30-34-34) sts.

Size L only: Next row: (RS). K1. Sl1.
K1. pss0. Pat to last 3 sts. K2tog. K1.
32 sts.

Next row: P2. Pat to last 2 sts. P2.

All Sizes: Cast off.

POCKET LININGS (Make 2).

With larger needles, cast on 24 sts and
work 6 rows in stocking st, ending with
RS facing for next row. Leave these sts
on a spare needle.

LEFT FRONT

**With smaller needles, cast on 49 (53-
59-63) sts.

Work 2 ins [5 cm] in (K1. P1) ribbing
as given for Back ending on a 2nd row
and inc 10 (12-10-12) sts evenly across
last row. 59 (65-69-75) sts.**

Change to larger needles and proceed
in pat as follows:

1st row: (RS). (P1. KB1) 5 (8-10-13)
times. Work 1st row of Panel Pat A.
Work 1st row of Panel Pat B. (P2. C2B)
twice. P1.

2nd row: K1. (P2. K2) twice. Work
2nd row of Panel Pat B. Work 2nd row
of Panel Pat A. K10 (16-20-26).

These 2 rows form rice st pat.

Panel pats are now in position.

Cont in pat, keeping cont of panel pats
for 4 more rows.

Divide for pocket: Next row: (RS). Pat
across 10 (16-20-26) sts. K24 from first
pocket lining. Leave rem 49 sts on a
spare needle.

Next row: P24 from first pocket lining.
Pat across 10 (16-20-26) sts.

Cont in pat on these 34 (40-44-50) sts
as established until 37 rows in total
have been worked.

Next row: (WS). Cast off 24 sts. Pat to
end of row. 10 (16-20-26) sts rem. **Do
not** break yarn. Leave these sts on a
spare needle.

With RS of work facing, join second ball
of yarn to rem 49 sts. Pat to end of row.
Work a further 37 rows pat, thus
ending with RS facing for next row.
Break yarn.

Joining row: (RS). Pat across 10 (16-
20-26) sts from left side. Pat across
49 sts. 59 (65-69-75) sts.

Cont in pat until work from beg
measures 15 (15½-16-17) ins [38
(39.5-40.5-43) cm], ending with RS
facing for next row.

Shape raglan and V-neck: 1st row: (RS).
Cast off 4 (4-5-5) sts (raglan edge). Pat to
last 5 sts. Work 2tog (v-neck shaping).
C2B. P1. 54 (60-63-69) sts rem.

2nd row: Pat to last 2 sts. P2.

3rd row: K1. Sl1. K1. pss0. Pat to end
of row.

Keeping cont of pat, dec 1 st at raglan
edge as before on every following alt
row from previous dec 22 (20-19-15)
times more, then every row 7 (11-19-
27) times, AT THE SAME TIME, dec
1 st at V-neck edge on every following
6th (6th-4th-4th) row from previous
dec 9 (9-13-13) times more. 15 (17-12-
13) sts rem.

Dec 1 st at raglan edge, as before, on
every row 13 (15-10-11) times more.
2 sts rem.

Size L only: Next row: (WS). P2.

All sizes: Next row: (RS). Sl1. K1.
pss0. Fasten off.

RIGHT FRONT

Work from ** to ** as given for Left
Front.

Change to larger needles and proceed
in pat as follows:

1st row: (RS). P1. (C2F. P2) twice.
Work 1st row of Panel Pat B. Work 1st
row of Panel Pat A. (KB1. P1) 5 (8-10-
13) times.

2nd row: K10 (16-20-26). Work 2nd
row of Panel Pat A. Work 2nd row of
Panel Pat B. (K2. P2) twice. K1.

These 2 rows form rice st pat.

Panel pats are now in position.

Cont in pat, keeping cont of panel pats
for 4 more rows.

Divide for pocket: Next row: (RS). Pat
across 49 sts. **Turn.** Leave rem 10 (16-
20-26) sts on a spare needle.

Work a further 37 rows pat, thus
ending with RS facing for next row. **Do
not** break yarn.

With RS of work facing and second ball of yarn, K24 from 2nd pocket lining. Pat across rem 10 (16-20-26) sts on spare needle.

Next row: Pat across 10 (16-20-26) sts. P24 from second pocket lining.

Cont in pat on these 34 (40-44-50) sts as established until 37 rows in total have been worked.

Next row: (WS). Pat across 10 (16-20-26) sts. Cast off 24 sts. Fasten off.

Joining row: (RS). Pat across 49 sts. Pat across 10 (16-20-26) sts from left side. 59 (65-69-75) sts.

Cont in pat until work from beg measures 15 (15½-16-17) ins [38 (39.5-40.5-43) cm], ending with WS facing for next row.

Shape raglan and V-neck: 1st row: Cast off 4 (4-5-5) sts (raglan edge). Pat to end of row.

2nd row: P1. C2B. Work 2tog (v-neck shaping). Pat to last 3 sts. K2tog. K1. 53 (59-62-68) sts.

3rd row: Work even in pat.

Keeping cont of pat, dec 1 st at raglan edge as before on every following alt row from previous dec 22 (20-19-15) times more, then every row 7 (11-19-27) times, AT THE SAME TIME, dec 1 st at V-neck edge on every following 6th (6th-4th-4th) row from previous dec 9 (9-13-13) times more. 15 (17-12-13) sts rem.

Dec 1 st at raglan edge, as before, on every row 13 (15-10-11) times more. 2 sts rem.

Size L only: Next row: (WS). P2.

Next row: (RS). K2tog. Fasten off.

SLEEVES

With smaller needles, cast on 57 sts and work 2 ins [5 cm] in (K1. P1) ribbing as given for Back ending on a 2nd row and inc 15 sts evenly across last row. 72 sts.

Change to larger needles and proceed in pat as follows:

1st row: (RS). (P1. KB1) 3 times. Work 1st row of Panel Pat A. Work 1st row of Panel Pat B. Work 1st row of Panel Pat A. (KB1. P1) 3 times.

2nd row: K6. Work 2nd row of Panel Pat A. Work 2nd row of Panel Pat B. Work 2nd row of Panel Pat A. K6.

These 2 rows form rice st pat.

Panel pats are now in position.

Sizes L and XL only: Cont in pat, keeping cont of panel pats, inc 1 st each end of needle on next and following 4th rows until there are (76-80) sts, taking inc sts into rice pat. Work 5 rows even in pat.

All Sizes: Cont in pats, keeping cont of panel pats, inc 1 st each end of needle on next and following 6th rows until there are 98 (100-104-108) sts taking inc sts into rice pat.

Cont even in pat until Sleeve from beg measures 18 (18½-19-19½) ins [45.5 (47-48-49.5) cm] ending with RS facing for next row.

Shape raglans: Keeping cont of pat, cast off 4 (4-5-5) sts beg next 2 rows. 90 (92-94-98) sts.

1st row: K2. Sl1. K1. pss0. Pat to last 4 sts. K2tog. K2.

2nd row: P2. Pat to last 2 sts. P2.

Rep last 2 rows 30 (31-31-30) times more. 28 (28-30-36) sts.

Next row: K2. Sl1. K1. pss0. Pat to last 4 sts. K2tog. K2.

Next row: P2. P2tog. Pat to last 4 sts. P2togtbl. P2.

Rep last 2 rows 1 (1-1-3) time(s) more. 20 (20-22-20) sts.

Size L only: Next row: (RS). K2. Sl1. K1. pss0. Pat to last 4 sts. K2tog. K2. 20 sts.

Next row: P2. Pat to last 2 sts. P2.

All Sizes: Cast off.

FINISHING

Pin garment pieces to measurements. Cover with a damp cloth leaving to dry. Sew raglan seams.

Button and Buttonhole Band: With smaller needles, cast on 9 sts. Proceed in (K1. P1) ribbing as given for Back until band when slightly stretched, fits up Left Front for Her or Right Front for Him to shoulder, sewing in place as you work. Mark position for 6 buttons, having the top button ½ inch [1 cm] below beg of front shaping and the bottom button ½ inch [1 cm] above lower edge.

Cont in ribbing around back neck edge and down opposite front edge working buttonholes to correspond to button position as follows:

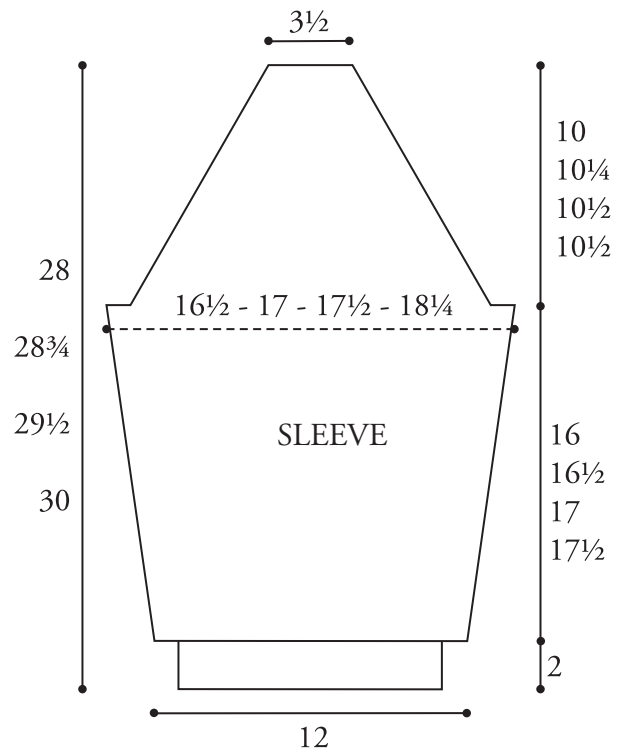
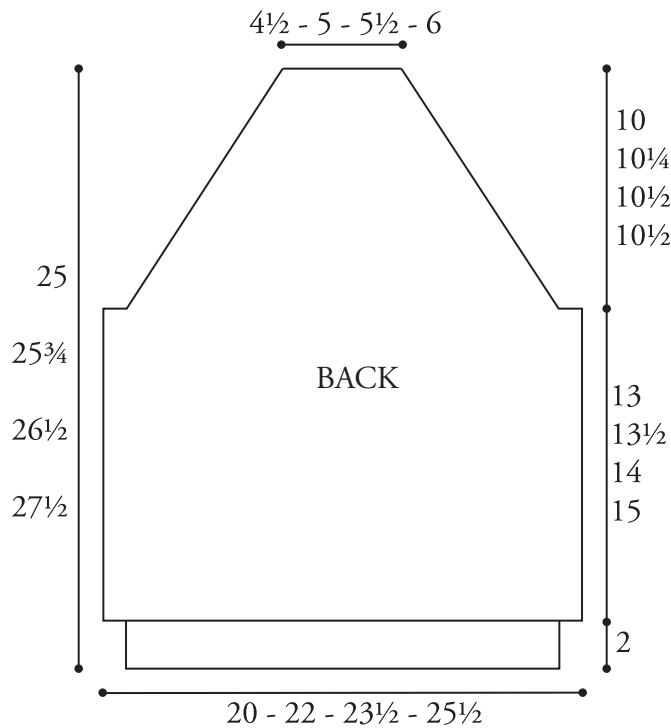
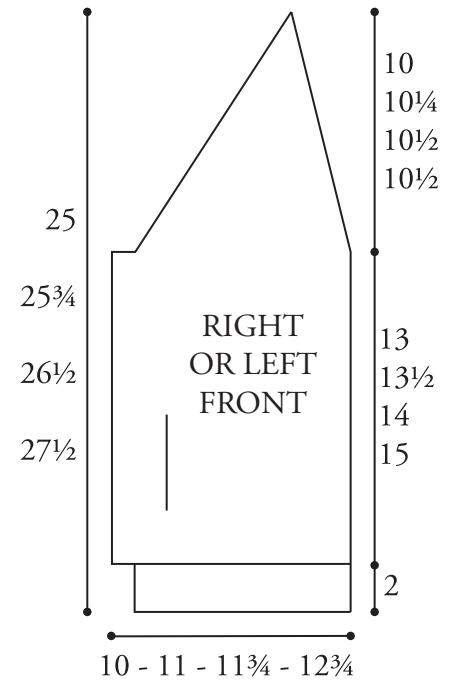
His Version: (RS). Rib 4. Cast off 2 sts. Rib to end of row.

Her Version: (RS). Rib 3. Cast off 2 sts. Rib to end of row.

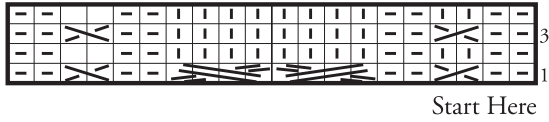
Both Versions: Next row: Rib, casting on 2 sts over cast off sts. Cast off in ribbing.

Pocket Edging: With RS of work facing and smaller needles, pick up and knit 32 sts along pocket opening. Beg on a 2nd row, work 7 rows in (K1, P1) ribbing as given for Back. Cast off in ribbing. Sew sides of Pocket Edging in position. Sew Pocket Lining in position to WS.

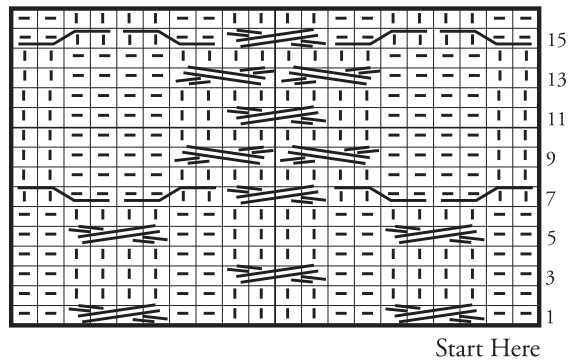
Sew side and sleeve seams. Sew buttons to correspond to buttonholes.











PANEL PAT A



PANEL PAT B



Key

-  = Knit on RS rows and purl on WS rows.
-  = Purl on RS rows and knit on WS rows.
-  = C2F
-  = C2B
-  = C4B
-  = C4F
-  = T4B
-  = T4F

 **Patons**

... a part of your life.

P.O. Box 40, Listowel ON N4W 3H3