

Patons®  
Canadiana



CABLES AND HEARTS  
DOG COAT

SIZES

To fit dog chest measurement

Petite	10 ins	[25.5 cm]
Small	13 ins	[33 cm]
Medium	16 ins	[40.5 cm]
Large	24 ins	[61 cm]
Extra-Large	30 ins	[76 cm]

TENSION

18 sts and 24 rows = 4 ins [10 cm] in stocking st with larger needles.

MATERIALS

Patons Classic Wool (100 g/3.5 oz)  
or Patons Décor (100 g/3.5 oz)

Size	P	S	M	L	XL
	1	2	2	2	3 ball(s)

Sizes 4 mm (U.S. 6) and 5 mm (U.S. 8) knitting needles. Set of four size 4 mm (U.S. 6) double-pointed knitting needles **or size needed to obtain tension.** Cable needle.

TENSION

18 sts and 24 rows = 4 ins [10 cm] in stocking st with larger needles.

ABBREVIATIONS

**C2B** = knit into front of 2nd st on needle, then knit the first st slipping both sts off needle tog.

INSTRUCTIONS

*The instructions are written for smallest size. If changes are necessary for larger sizes, the instructions will be written thus: ( ).*

With smaller needles cast on 40 (48-60-84-100) sts.

**1st row:** (RS). \*K2. P2. Rep from \* to end of row.

Rep last row until work from beg measures 2½ ins [6 cm] ending on a 2nd row and inc 9 (9-5-5-5) sts evenly across last row. 49 (57-65-89-105) sts. Place a marker at each end of row.

Change to larger needles and proceed in pat as follows:

**1st row:** (RS). (P2. K2) 1 (2-3-6-8) time(s). P2. (K2. P2) 3 times. Work 1st

row of Chart, reading row from **right** to left. P2. (K2. P2) 3 times. (K2. P2) 1 (2-3-6-8) time(s).

**2nd row:** (K2. P2) 1 (2-3-6-8) time(s). K2. (P2. K2) 3 times. Work 2nd row of Chart, reading row from **left** to right. K2. (P2. K2) 3 times. (P2. K2) 1 (2-3-6-8) time(s).

**3rd row:** Inc 1 st in first st. K1. P2. (K2. P2) 0 (1-2-5-7) time(s). P2. (C2B. P2) 3 times. Work 3rd row of Chart. P2. (C2B. P2) 3 times. (P2. K2) 0 (1-2-5-7) time(s). P2. K1. Inc 1 st in last st. 51 (59-67-91-107) sts.

**4th row:** Inc 1 st in first st. (P2. K2) 1 (2-3-6-8) time(s). K2. (P2. K2) 3 times. Work 4th row of Chart. K2. (P2. K2) 3 times. (K2. P2) 1 (2-3-6-8) time(s). Inc 1 st in last st. 53 (61-69-93-109) sts.

These 4 rows establish pat. Chart is now in position.

Cont in pat as established, keeping cont of Chart, inc 1 st at each end of needle on next 0 (0-3-3-5) rows, then following alt rows 2 (3-4-11-15) times, taking inc sts into pat and ending with RS facing for next row. 57 (69-83-121-149) sts.

**Leg openings: Next row:** Pat across 6 (7-8-11-13) sts. Join 2nd ball of yarn and cast off next 4 (5-6-9-12) sts. Pat across 37 (45-55-81-99) sts (including st on needle after cast off). Join 3rd ball of yarn and with 3rd ball, cast off next 4 (5-6-9-12) sts. Pat to end of row.

Working each section with separate balls of yarn, cont even in pat until Leg Openings from cast off sts measure 1 (1½-1½-2½-3) ins [2.5 (2.5-4-6-7.5) cm], ending with RS facing for next row.

**Joining row:** Pat across 6 (7-8-11-13) sts. **Turn.** Cast on 4 (5-6-9-12) sts. **Turn.**



Pat across 37 (45-55-81-99) sts. **Turn.** Cast on 4 (5-6-9-12) sts. **Turn.** Pat to end of row. 57 (69-83-121-149) sts. Cont even in pat until work from markers measures 4½ (5½-7-10-11) ins [11.5 (14-18-25.5-28) cm], ending with RS facing for next row. Place a 2nd set of markers at each end of last row.

**Next row:** (RS). Sl1. K1. pss0. Pat to last 2 sts. K2tog.

**Next row:** Pat to end of row.

Rep last 2 rows 3 (4-7-11-14) times more. 35 (43-47-69-89) sts.

Cont even in pat until work from first set of markers measures 10 (12½-15½-21-23) ins [25.5 (32-34.5-53.5-58.5) cm], ending with RS facing for next row. Leave rem sts on spare needle.

Sew neck seam to second set of markers.

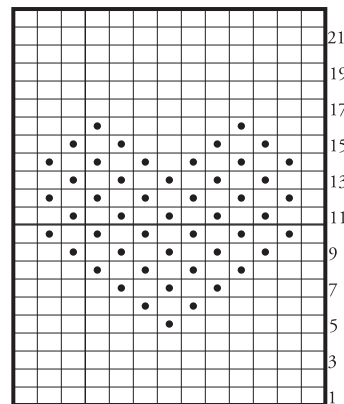
(36-40-50-60) sts along body from 2nd marker to Back. K35 (43-47-69-89) from spare needle dec 3 (3-3-5-5) sts evenly across. Pick up and knit 28 (36-40-50-60) sts along opposite side of body to 2nd marker. 88 (112-124-164-204) sts. Join in rnd and work 9 (9-13-13-13) rnds in (K2. P2) ribbing. Cast off in ribbing.

**Leg Ribbing:** With RS facing and double pointed needles, pick up and knit 8 (9-10-12-16) sts on first 2 needles and 8 (10-12-12-16) sts on third needle. 24 (28-32-36-48) sts. Join in rnd and work 9 (9-13-13-13) rnds in (K2. P2) ribbing. Cast off in ribbing.

**Back shaping:** Cast off 7 (8-10-14-15) sts beg next 2 rows. 43 (53-63-93-119) sts.

**Body Ribbing:** With RS facing and circular needle, pick up and knit 28

### CHART



Start Here

### Key

□ = Knit on RS rows and purl on WS rows.

◼ = Purl on RS rows and knit on WS rows.

**Patons**

... a part of your life.

P.O. Box 40, Listowel ON N4W 3H3