

Patons® MELODY



Hearts and Flowers Blanket and Pillows

MEASUREMENTS

Blanket: Approx 42½ x 58½ ins [108 x 148.5 cm].

Pillow: Approx 14½ ins [35.5 cm] at widest point.

MATERIALS

Patons® Melody (100 g/3.5 oz)

Blanket

Main Color (MC) (Orange) **6 balls**

Contrast A (Magenta) **3 balls**

Contrast B (Pink) **3 balls**

Pillow

Main Color (MC)

Orange or Pink **2 balls**

Contrast A Pink or Orange **1 ball**

Size 10 mm (U.S. 15) knitting needles and size 10 mm (U.S. 15) circular needle 24 ins [60 cm] long **or size needed to obtain tension.** Stuffing for Pillows.

TENSION

9 sts and 14 rows = 4 ins [10 cm] in stocking st.

ABBREVIATIONS

M1 = make one st by picking up horizontal loop lying before next st and knitting into back of loop.

M1P = make one st by picking up horizontal loop lying before next st and purling into back of loop.

MB = (Make Bobble). [(K1. yfwd) twice. K1] all in next st. 5 sts. **Turn.** P2tog. P1. P2tog. **Turn.** Sl1. K2tog. pss0. 1 st remains. Bobble complete.

INSTRUCTIONS

Note: When working from charts, wind small balls of the colors to be used, one for each separate area of color in the design. Start new colors at appropriate points. To change colors, twist the two colors around each other where they meet, on WS, to avoid a hole.

Blanket

Strip 1 (make 1)

With A, cast on 31 sts.

Work Chart I in stocking st to end of chart, reading **knit** rows from **right** to left and **purl** rows from **left** to right, noting color 1 is A, color 2 is MC and color 3 is B.

Change to MC and work 40 rows stocking st.

Work Chart I in stocking st to end of chart noting color 1 is B, color 2 is A and color 3 is MC.

Change to A and work 40 rows stocking st.

Work Chart I in stocking st to end of chart noting color 1 is MC, color 2 is B and color 3 is A. Cast off.

Strip 2 (make 1)

With B, cast on 31 sts.

Work 40 rows stocking st.

Work Chart II in stocking st to end of chart, reading **knit** rows from **right** to left and **purl** rows from **left** to right, noting color 1 is A and color 2 is MC.

Change to MC and work 40 rows stocking st.

Work Chart II in stocking st to end of chart, noting color 1 is B and color 2 is A.

Change to A and work 40 rows stocking st. Cast off.

Strip 3 (make 1)

With MC, cast on 31 sts.

Work Chart I in stocking st to end of chart, noting color 1 is MC, color 2 is A and color 3 is B.

Change to B and work 40 rows stocking st.

Work Chart I in stocking st to end of chart noting color 1 is A, color 2 is MC and color 3 is B.

Change to MC and work 40 rows stocking st.



ABBREVIATIONS: www.patonsyarns.com/glossary

INTERMEDIATE

Work Chart I in stocking st to end of chart, noting color 1 is B, color 2 is A and color 3 is MC. Cast off.

Sew Strips tog in following sequence: 1, 2, 3.

Side Edging: With RS of work facing, MC and circular needle, pick up and knit 126 sts evenly along side edge. **Do not join.** Work 4 rows garter st (knit every row). Cast off knitwise (WS). Rep on opposite side.

Top Edging: With RS of work facing, MC and circular needle, pick up and knit 94 sts evenly along top edge (including ends of side edging). Work 4 rows garter st. Cast off knitwise (WS). Rep on bottom edge.

Heart Pillow

FRONT and BACK (make 2 pieces alike)

With MC, cast on 1 st.

1st row: (RS). (K1. P1. K1) all in same st. 3 sts.

2nd row: P3.

3rd row: (K1. M1) twice. K1. 5 sts.

4th row: P5.

5th row: K1. M1. Knit to last st. M1. K1.

6th row: P1. M1P. Purl to last st. M1P. P1.

7th to 12th rows: Rep last 2 rows 3 times more. 21 sts.

13th row: As 5th row.

14th row: Purl.

15th to 20th rows: Rep last 2 rows 3 times more. 29 sts.

21st row: As 5th row. 31 sts.

22nd to 24th rows: Work even in stocking st.

25th row: As 5th row. 33 sts.

26th to 36th rows: Work even in stocking st.

Divide top of Heart: **37th row:** K16. Cast off center st. Knit to end of row. Working on last 16 sts, proceed as follows:

38th row: Purl.

39th row: K1. K2tog. Knit to end of row.

40th row: Purl.

41st row: K1. K2tog. Knit to last 3 sts. Sl1. K1. pss0. K1.

42nd row: Purl.

43rd and 44th rows: Rep last 2 rows once more. 11 sts.

45th row: As 41st row.

46th row: P1. P2togtbl. Purl to end of row.

47th and 48th rows: Rep last 2 rows once more. 5 sts.

49th row: K1. K2tog. Knit to end of row. 4 sts.

Cast off purlwise.

With WS of work facing, rejoin MC to rem 16 sts. Purl to end of row.

39th row: Knit to last 3 sts. Sl1. K1. pss0. K1.

40th row: Purl.

41st row: K1. K2tog. Knit to last 3 sts. Sl1. K1. pss0. K1.

42nd row: Purl.

43rd and 44th rows: Rep last 2 rows once more. 11 sts.

45th row: As 41st row.

46th row: Purl to last 3 sts. P2tog. P1.

47th and 48th rows: Rep last 2 rows once more. 5 sts.

49th row: K2. Sl1. K1. pss0. K1. 4 sts. Cast off purlwise.

FINISHING

Sew Front and Back tog leaving an opening at side to insert stuffing. Stuff firmly. Sew opening closed, leaving a small hole to insert ends of twisted cord.

Twisted Cord

Cut two 6 yard [5.5 m] lengths each of MC and A. Taking all strands tog hold one end and with someone holding other end, twist strands to the right until they begin to curl. Cont until cord is tightly twisted. Fold the 2 ends tog and tie in a knot so the cord will not unravel. The strands will now twist themselves tog.

Sew twisted cord along seam. Secure ends in hole.

Twisted Cord

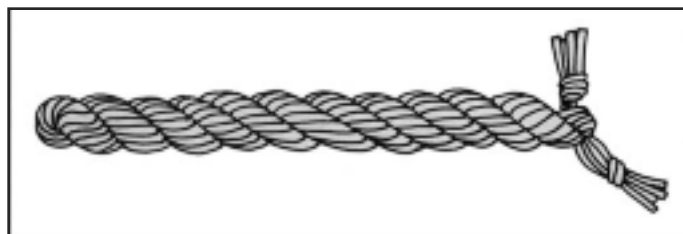
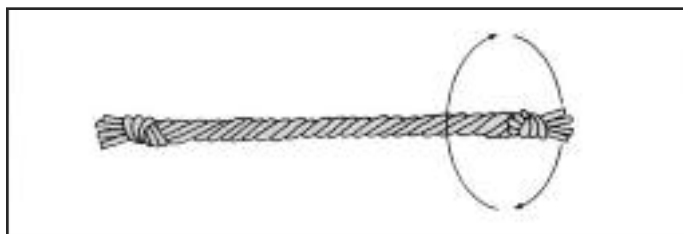
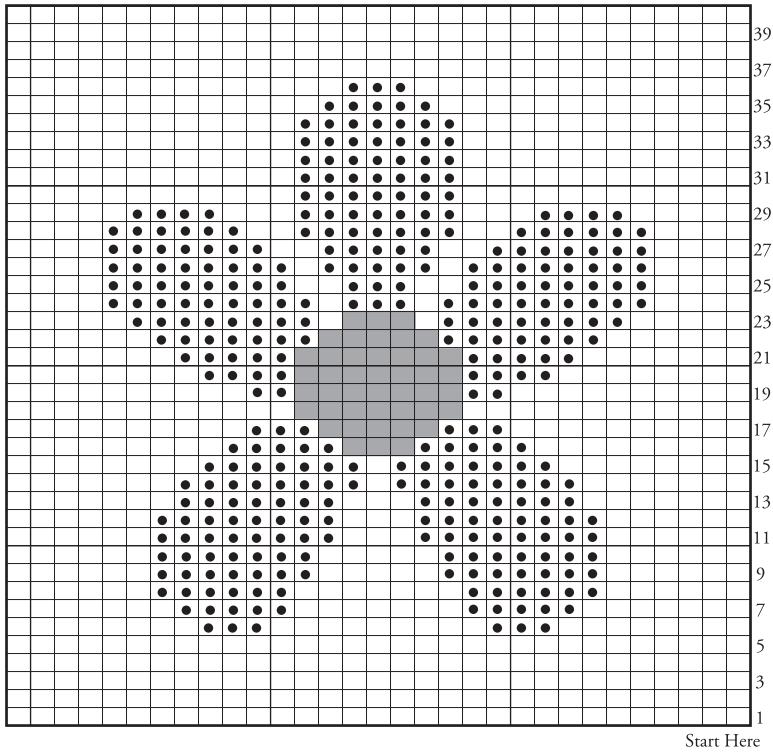


Chart I



Key

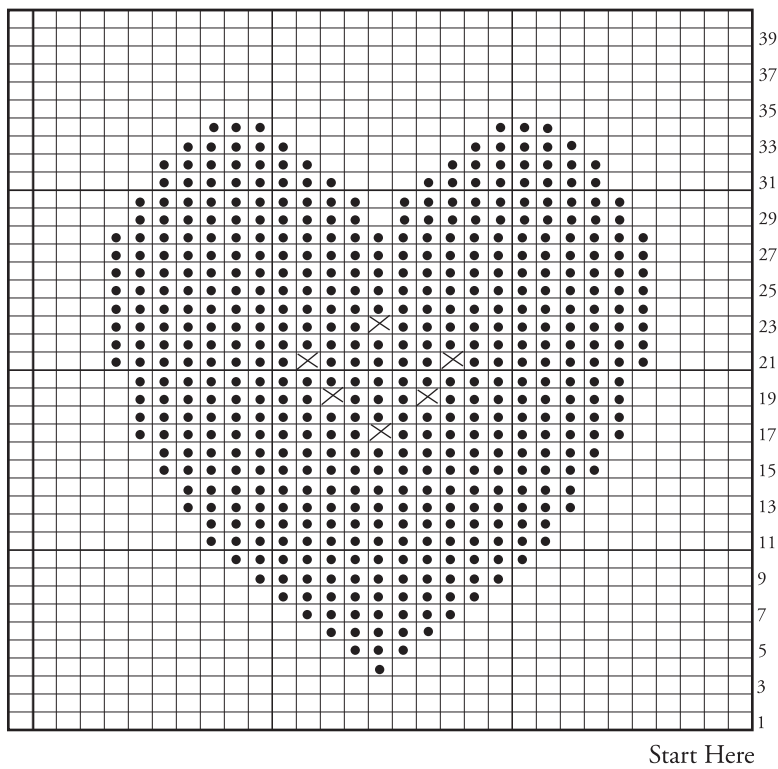
□ = Color 1

● = Color 2

■ = Color 3

⊠ = MB with Color 1

Chart II



Patons

... a part of your life.

P.O. Box 40, Listowel ON N4W 3H3