

# Patons® MELODY



## Geometric Blanket and Pillows

### MEASUREMENTS

**Blanket:** Approx 44 x 58 ins [112 x 147.5 cm].

**Pillows:** 14 ins [35.5 cm] square.

### MATERIALS

Patons® Melody (100 g/3.5 oz)

#### Blanket

**Main Color (MC)**

(Ombre) **6 balls**

**Contrast A (Yellow) 1 ball**

**Contrast B (Blue) 6 balls**

#### Pillow A (B-C)

**Main Color (MC)** (Ombre)

**2 (2-2) balls**

**Contrast A (Yellow) 1 (1-1) ball**

**Contrast B (Blue) 1 (1-1) ball**

Size 10 mm (U.S. 15) knitting needles  
**or size needed to obtain tension.** 3  
pillow forms 14 ins [35.5 cm] square.

### TENSION

9 sts and 14 rows = 4 ins [10 cm] in  
stocking st.

### INSTRUCTIONS

**Note:** When working from charts, wind small balls of the colors to be used, one for each separate area of color in the design. Start new colors at appropriate points. To change colors, twist the two colors around each other where they meet, on WS, to avoid a hole.

#### Blanket

**Solid Squares** (make 6)

With B, cast on 33 sts.

Proceed in stocking st for 48 rows, ending with RS facing for next row. Cast off.

#### Geometric Motifs I, II and III

**Motif I** (make 1 with MC and A, and 1 with MC and B)

With MC, cast on 33 sts.

Work Chart I in stocking st to end of chart, reading **knit** rows from **right** to left and **purl** rows from **left** to right. Cast off.

**Motif II** (make 1 with MC and A, and 1 with MC and B)

With MC, cast on 33 sts.

Work Chart II to end of chart, reading **knit** rows from **right** to left and **purl** rows from **left** to right.

**Motif III** (make 1 with MC and A, and 1 with MC and B)

With MC, cast on 33 sts.

Work Chart III to end of chart, reading **knit** rows from **right** to left and **purl** rows from **left** to right.

#### FINISHING

Sew Solid Squares and Geometric Motifs tog as shown on Diagram.

**Top and Bottom Edging:** With RS of work facing, circular needle and MC, pick up and knit 90 sts across top or bottom edge of Blanket.

Knit 4 rows. Cast off knitwise (WS).

**Side edging:** With RS of work facing, circular needle and MC, pick up and knit 126 sts along side edge of Blanket. Knit 4 rows. Cast off knitwise (WS).

Rep for other side.

#### Pillows

Make one set of Geometric motifs with MC and A, and one set with MC and B (6 squares in total).

For Pillow A use two Motif I squares.

With WS tog, sew 3 sides of pillow. Insert pillow form. Sew last side.

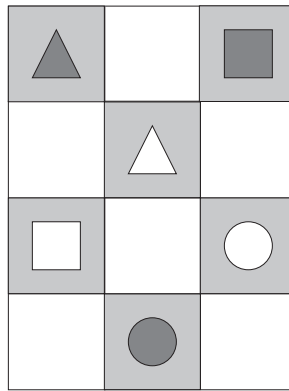
Rep for Pillow B substituting Motif II for Motif I.

Rep for Pillow C substituting Motif III for Motif I.






ABBREVIATIONS: [www.patonsyarns.com/glossary](http://www.patonsyarns.com/glossary)

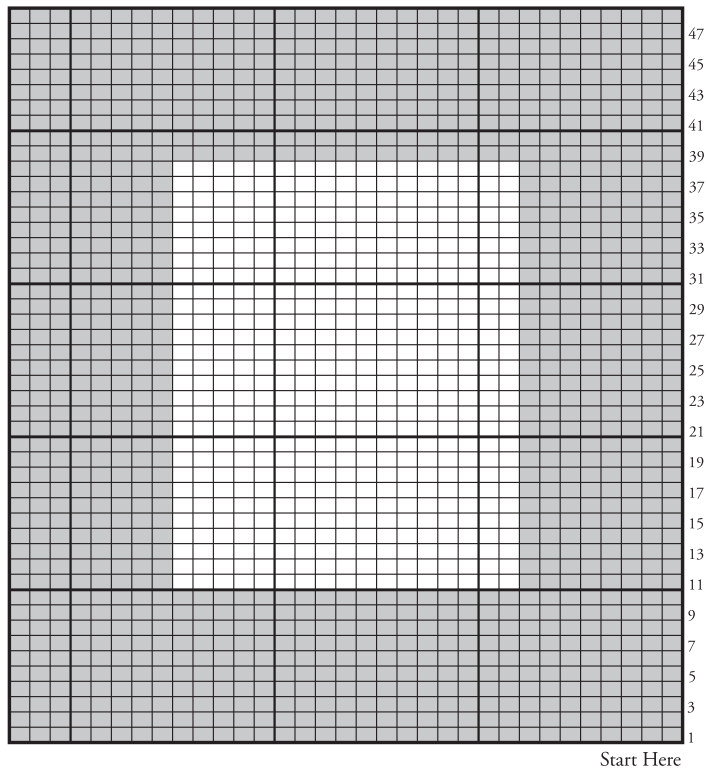
# Diagram





Key

-  = MC
-  = Contrast A
-  = Contrast B

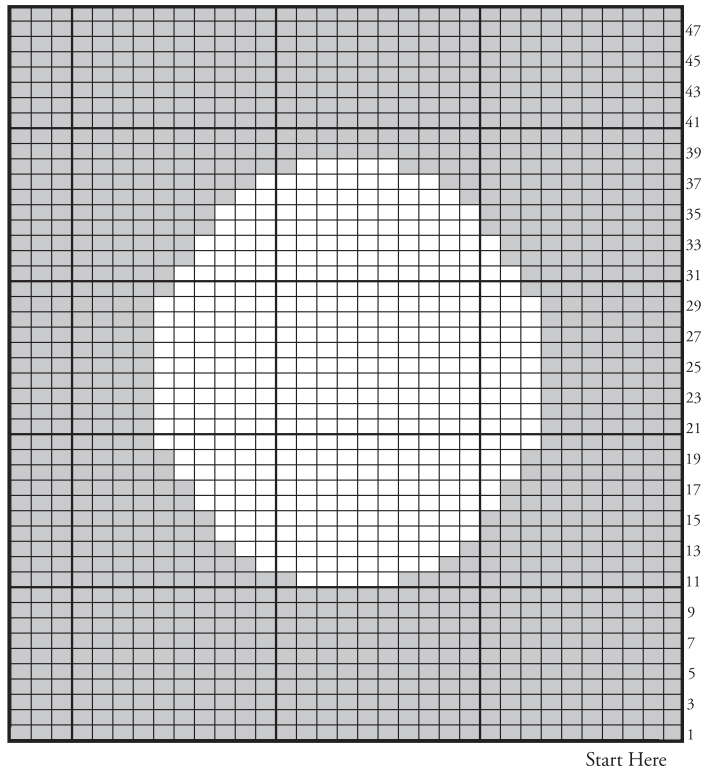
# Chart I



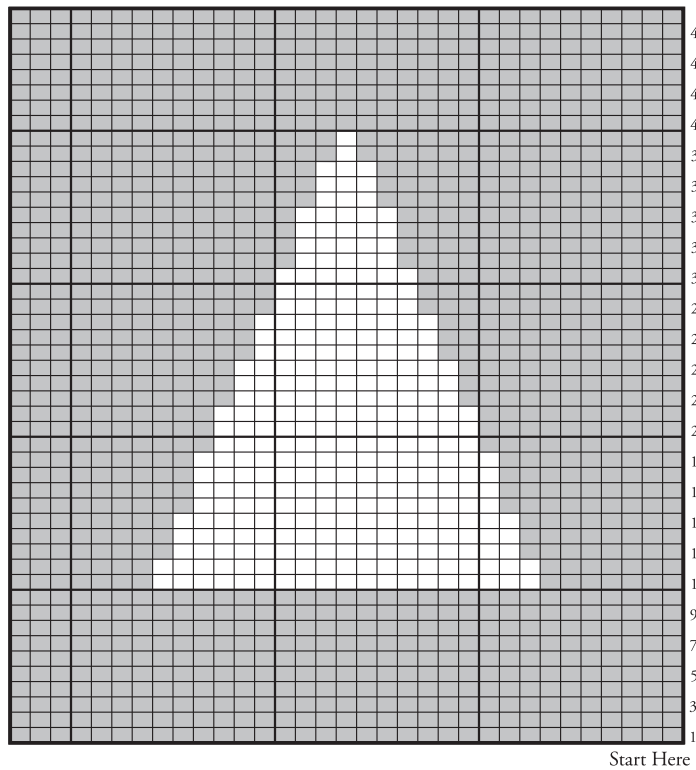
Key

-  = MC
-  = Contrast A or B

## Chart II



## Chart III



Key

■ = MC

□ = Contrast A or B

 **Patons**

*... a part of your life.*

P.O. Box 40, Listowel ON N4W 3H3